



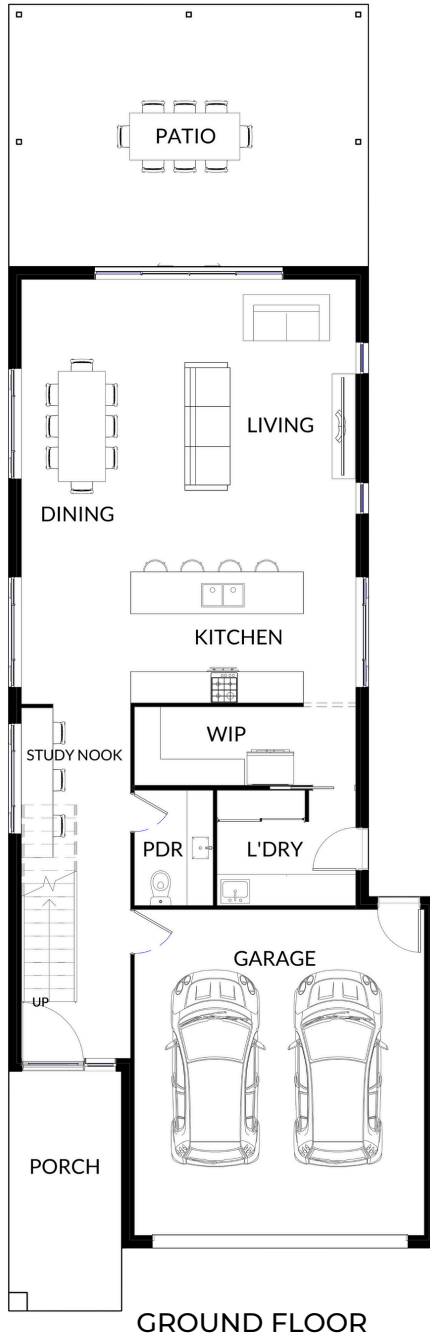
Breakwater 290

The Breakwater 290m² is a smart, modern two-storey design created for narrow blocks without compromising on space or style. Enjoy open-plan living downstairs with a sleek kitchen and walk-in pantry, flowing seamlessly to a large alfresco perfect for entertaining and with room to add a swimming pool.

Upstairs features three bedrooms, a second living area and a front balcony, creating the ideal retreat for the whole family. With a study nook, powder room and clever zoning throughout, the Breakwater 290 delivers contemporary living at its best.

Neater Homes has proudly been designing and constructing premium and luxury homes across Cairns, Port Douglas, the Tablelands, and as far south as Cardwell for over 40 years.





FEATURES

- Two-Storey Design
- Ideal for narrow-frontage
- 3 Bedroom, 2 Bathroom
- 1 Powder Room
- 2 Living Areas
- Open plan Living and Dining
- Modern Kitchen with Walk-in Pantry
- Internal staircase
- Bedrooms on one level, upstairs
- Study Nook
- Large Alfresco
- Upstairs Balcony
- Double Garage

DESIGN PARTICULARS

Living Areas	186.00m ²
Alfresco	55.00m ²
Porch	10.00m ²
Garage	39.00m ²
Total	290 m²

DIMENSIONS

Minimum Block Width	11.50 Mtrs
Floor Plan Width	8.30 Mtrs
Floor Plan Length	24.90 Mtrs

The artists impressions, photographs & plans shown are intended to depict a concept only and may show fixtures, fittings, finishes, structures, pools or landscaping that are not standard inclusions or offerings. Prospective customers should refer to the inclusions described in their contract and not rely on these images. All designs are Copyright ©Neater Constructions (Q) Pty Ltd and all plans are Copyright. QBCC 21788.