

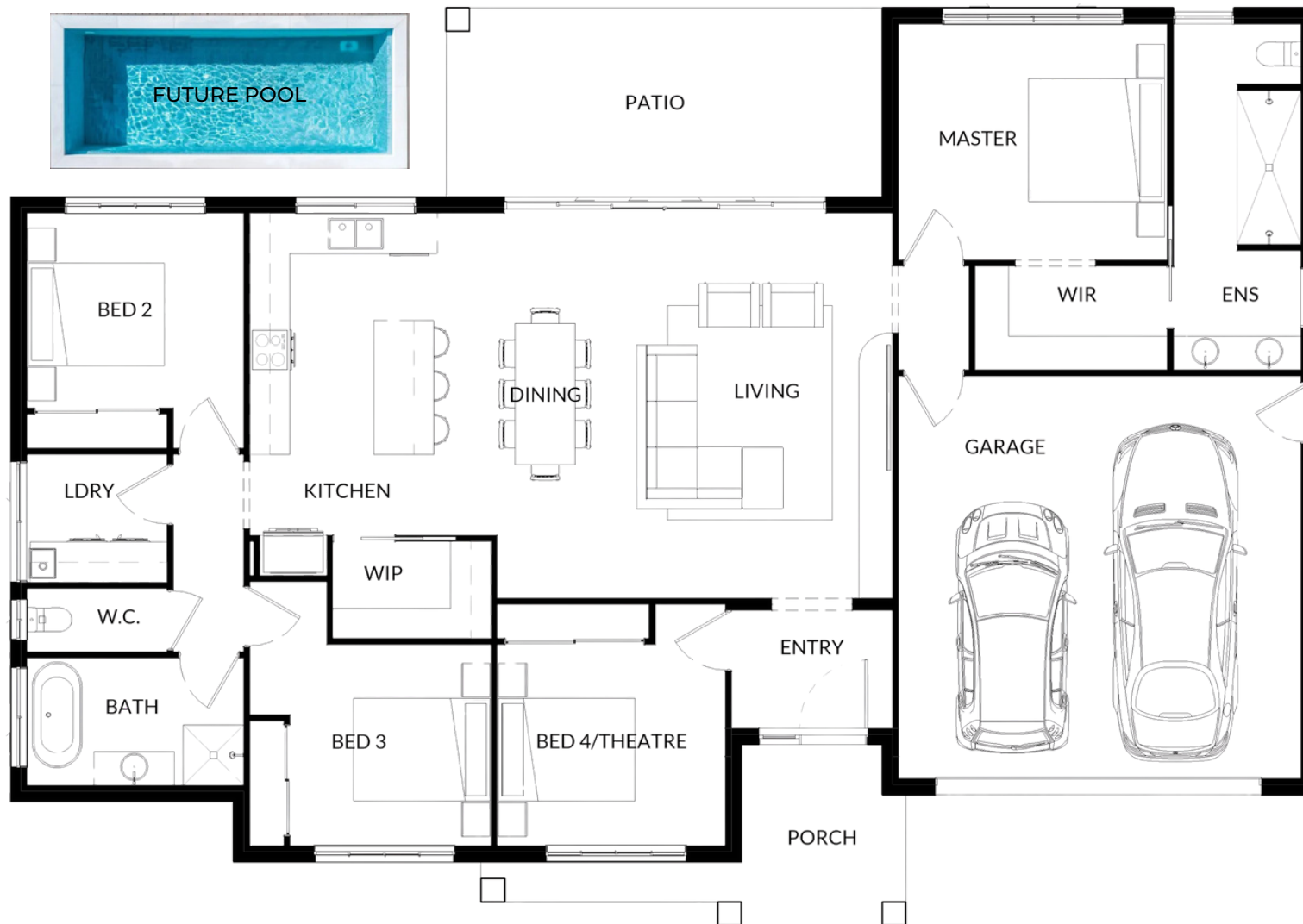


SOLACE 225

Perfectly suited to wide blocks or acreage, this thoughtfully designed home offers space, privacy, and timeless appeal. A grand entryway welcomes you inside, with the master suite privately positioned at the rear of the home, separated from the remaining bedrooms to create a true retreat. The flexible floorplan includes four spacious bedrooms, with the option to convert the fourth into a media room. Two well-appointed bathrooms complement a large central kitchen with a walk-in pantry, flowing out to a generous undercover patio—ideal for relaxed living and entertaining.

Neater Homes has proudly been designing and constructing premium and luxury homes across Cairns, Port Douglas, the Tablelands, and as far south as Cardwell for over 40 years.





FEATURES

- 4 Bedroom, 2 Bathrooms
- Large outdoor Patio
- Large Entrance
- Modern kitchen with Walk-in Pantry
- Open plan Living and Dining
- Option for a Media Room

DESIGN PARTICULARS

Living Area	158.5 m2
Patio	18.3 m2
Porch	8.8 m2
Garage	39.6 m2
Total	225.2 m2

DIMENSIONS

Minimum Block Width	23.97 Mtrs
Solace Width	19.47 Mtrs
Solace Length	13.68 Mtrs