

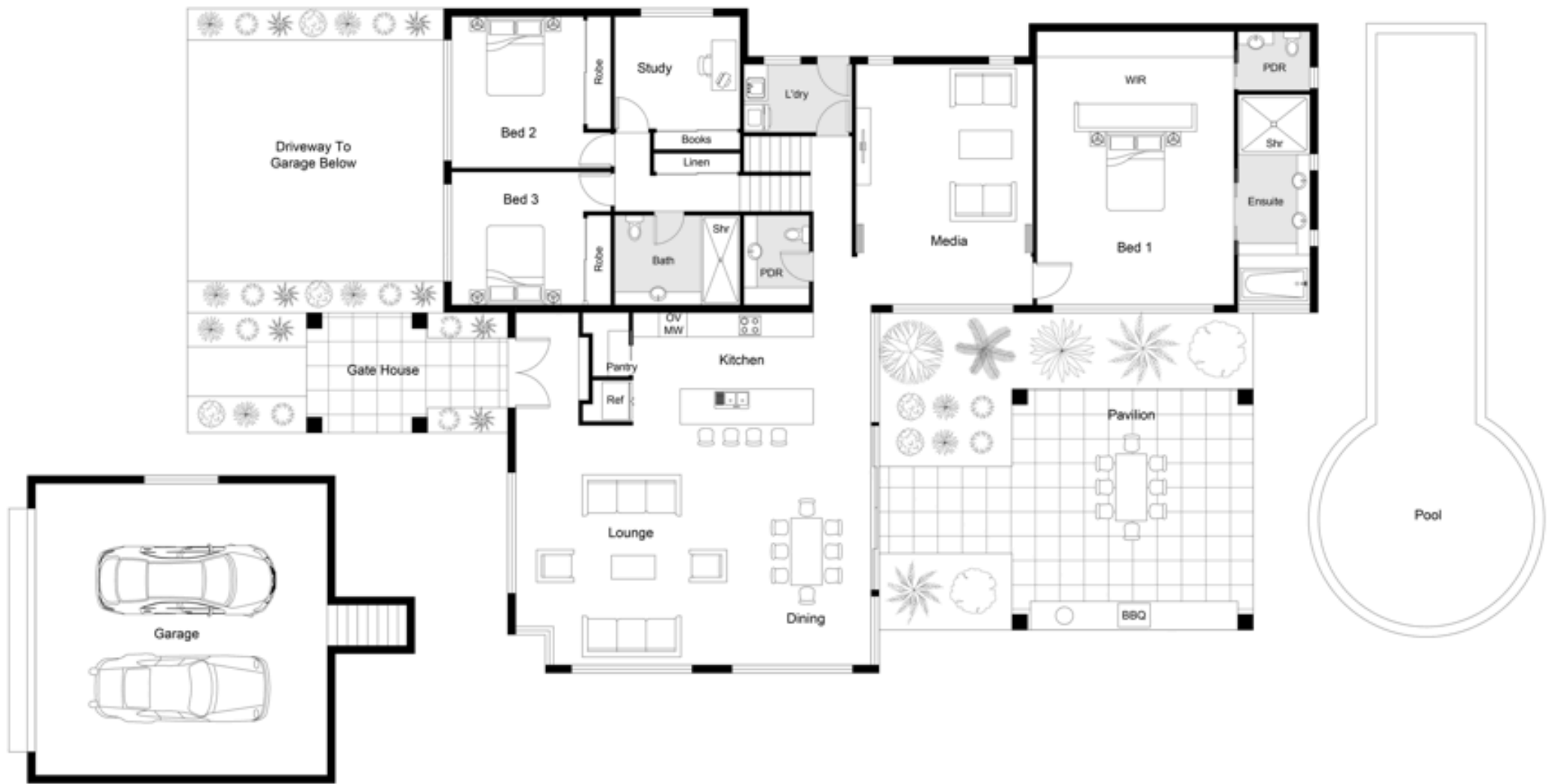


HINCHINBROOK 6

This architecturally designed split-level home combines style and versatility, making it the ideal luxury tropical retreat for modern families. From the gatehouse entry to the alfresco pavilion, every detail is designed with entertaining in mind. The layout offers plenty of opportunities to integrate lush gardens, enhancing the home's tropical feel. With three spacious bedrooms, including a resort-inspired master suite, a media room, study, and a built-in outdoor BBQ kitchen, this home is ready for relaxing and hosting alike—with space set aside for a designer pool to complete the experience.



Neater Homes has proudly been designing and constructing premium and luxury homes across Cairns, Port Douglas, the Tablelands, and as far south as Cardwell for over 40 years.



FEATURES

- Architecturally designed home
- Large outdoor pavilion with BBQ
- Modern kitchen with walk in pantry
- Media room
- Resort style master suite
- Powder room

DESIGN PARTICULARS

Living Area	240.0 m2
Pavillion	36.0 m2
Gatehouse	9.0 m2
Garage	60.0 m2
Total	345.0 m2

DIMENSIONS

Minimum Block Width	20.4 Mtrs
Hinchinbrook Width	16.2 Mtrs
Hinchinbrook Length	21.6 Mtrs

The artists impressions, photographs & plans shown are intended to depict a concept only and may show fixtures, fittings, finishes, structures, pools or landscaping that are not standard inclusions or offerings. Prospective customers should refer to the inclusions described in their contract and not rely on these images. All designs are Copyright ©Neater Constructions (Q) Pty Ltd and all plans are Copyright.